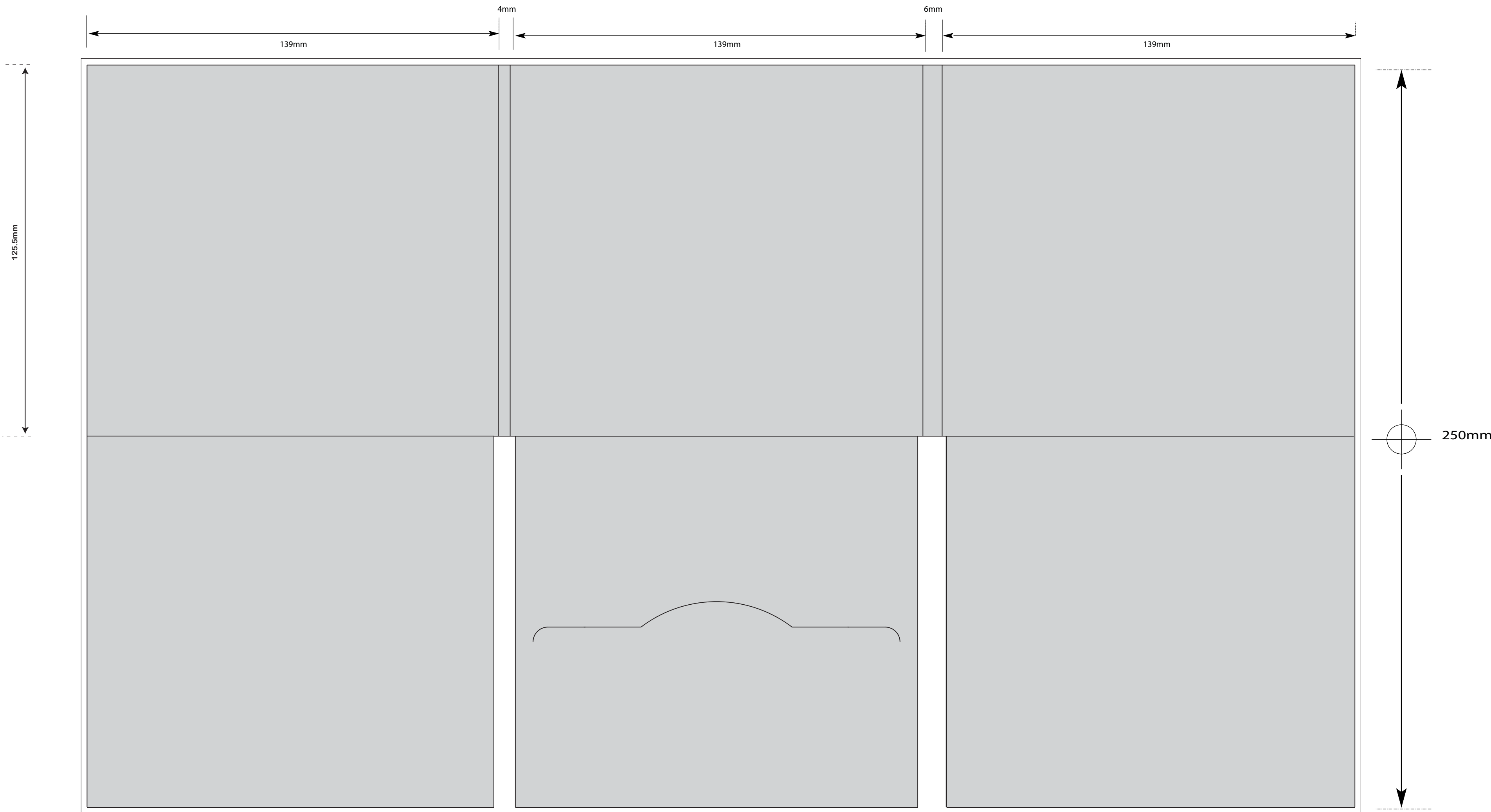




ARTWORK SPECIFICATION - 6 PANEL DIGIFILE

An additional 4mm bleed is required on all full-body artworks



Printable Area Required Bleed

SUPPLYING ARTWORK

Artwork can be supplied via email as a pdf attachment, as a download link for larger files or by disk or flash drive.

PREFERRED ARTWORK

Supplied as a Hi-Res PDF with fonts embedded. (Minimum picture/photo resolution of 300dpi)

ACCEPTABLE FILES TYPES

EPS file (with fonts outlined), Illustrator, Photoshop, Jpeg/Tiff, Quark & Indesign (please include relevant fonts, or embed in pdf's or supply as outlines/paths).

PLEASE CHECK YOUR FILE

Your design should have at least 4mm over-lap for bleed on all paper parts. CD/DVD artwork does not need to be supplied to exact specifications or with center hole removed - *we will always provide an emailed proof to the required specification*